

## NetSupport Configuration for Classroom or Computer Lab

Every Teacher that logs into a Teacher Workstation to manage NetSupport must **Configure** NetSupport the first time they use it.

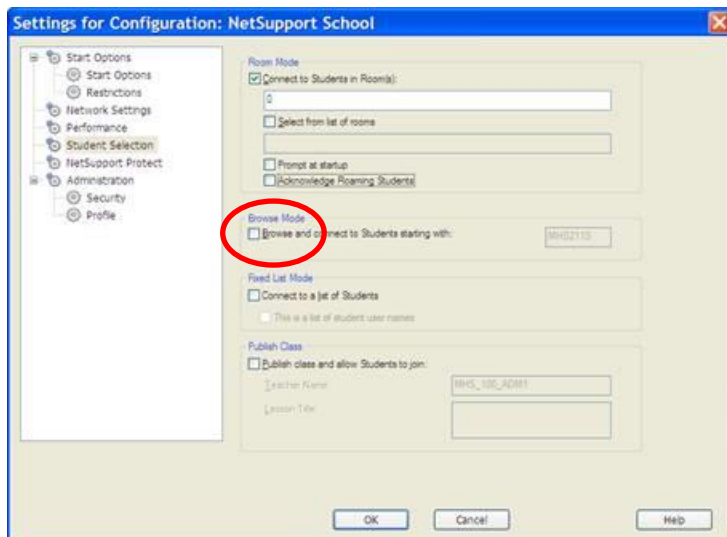
Below are the steps to configure NetSupport to monitor specific computers.

Click **School** in the upper left corner

Click **Configuration** (Gear icon) in the dropdown

Click **Student Selection** on the next screen

You will most likely see the screen below. The program defaults to "Room Mode" for 0. Change this to **Browse Mode**. This assures it checks each time which will help with possible missing workstations.



After choosing Browse Mode, enter the desired room number: **school code, room number, and the letter "S"** to only find the student computers in the desired lab/classroom. (Example: **MHS201S**) Anything else will possibly cause messages to popup on all machines including administrative machines. It will also interfere with other classrooms ability to monitor their students. See example below.

